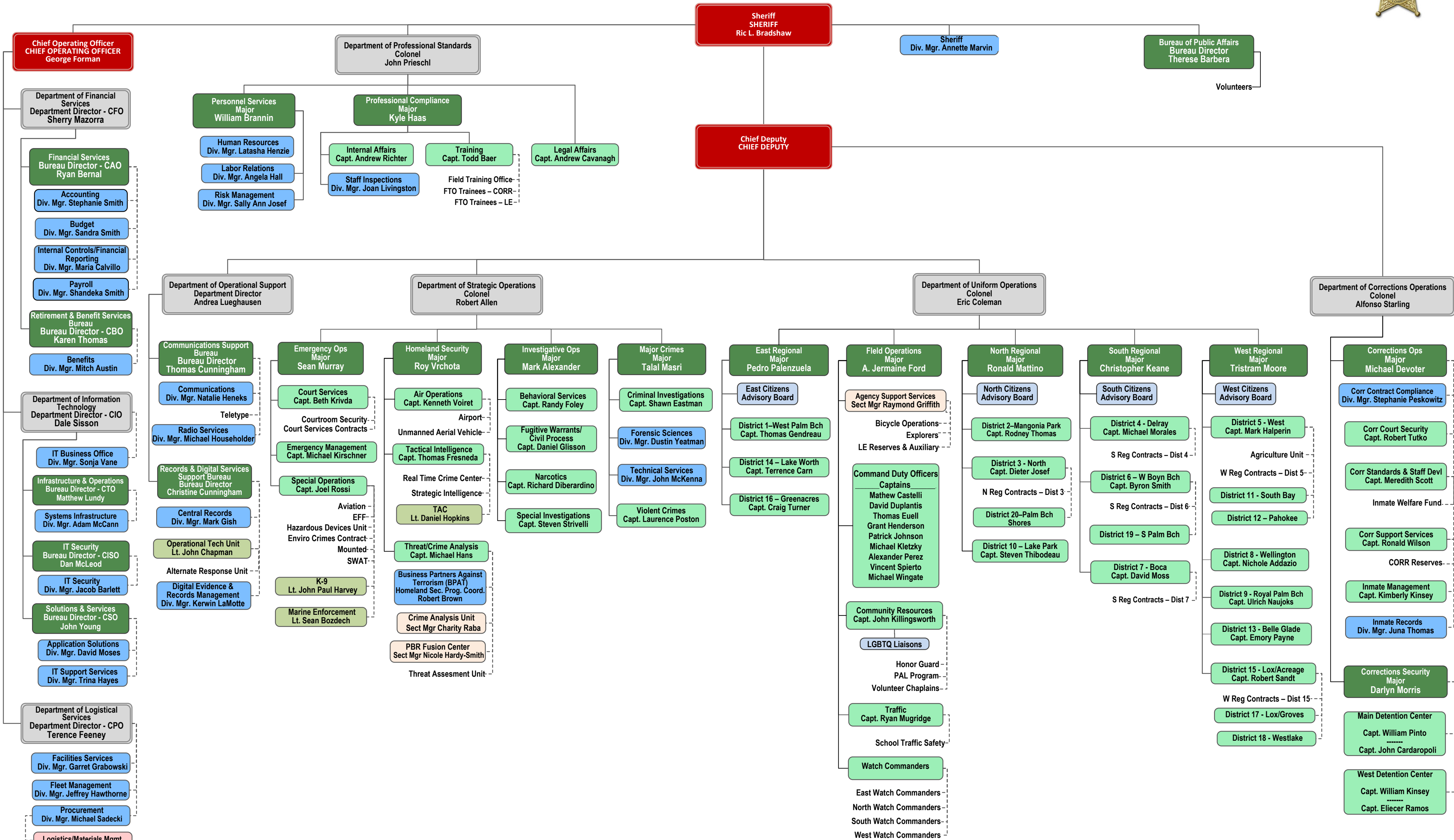


# Palm Beach County Sheriff's Office



<b>Legend:</b>	<b>Sheriff</b> Chief Deputy & COO	<b>Departments</b> Colonels & Director	<b>Bureaus</b> Majors & Bureau Directors	<b>Districts &amp; Divisions</b> Sworn	<b>Sections</b> Sworn	<b>Divisions</b> Civilian	<b>Sections</b> Civilian
----------------	--------------------------------------	---	---	---	--------------------------	------------------------------	-----------------------------

Note: The Org Chart will be released for significant changes otherwise updated quarterly.

Revised: February 27, 2025